

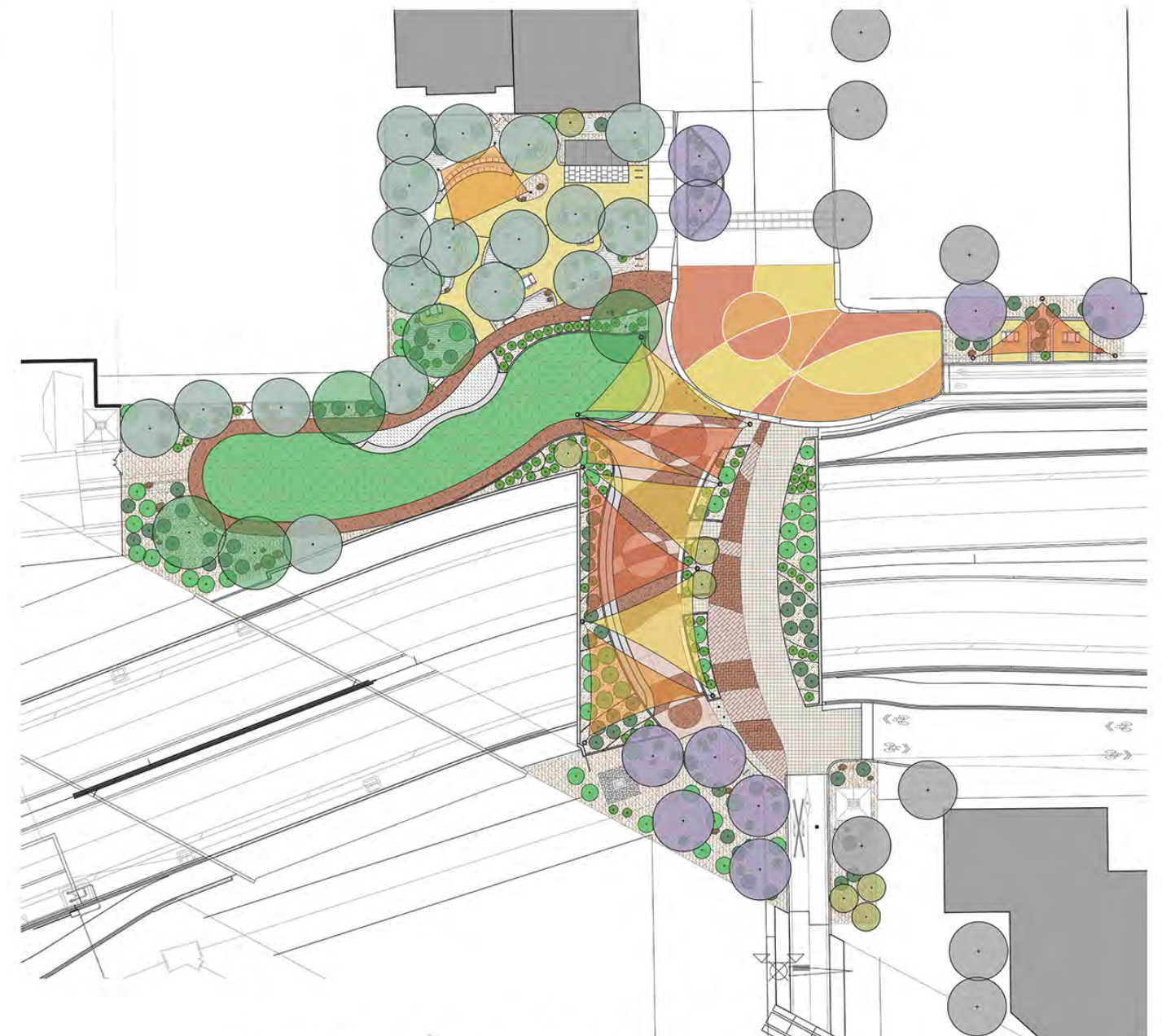
GOALS MET WITH BOTH DESIGNS

- Bike and Pedestrian Connections
- Shade
- Event Space
- Aesthetically Pleasing
- Seating Options



CURRENT DECK PLAZA AREA

- Total Deck Plaza Area is 37,617 sq. ft.
- Deck Plaza on Structure is 14,374 sq. ft.
- Concrete and Steel Planters
- Shade Structure with Acrylic and Perforated Metal Roof
- 29 Shade Trees
- Low Water Use Turf



REVISED DECK PLAZA AREA

- Total Deck Plaza Area is 39,053 sq. ft.
- Deck plaza on Structure is 8,712 sq. ft.
- Concrete and Steel Planters
- Simplified Shade Structures
- 29 Shade Trees
- Low Water Use Turf
- North Deck Plaza Area Remains the Same
- Enhanced Pavement on 9th Ave.



DECK PLAZA COMPARISON STUDY

11/28/18
Not to Scale